



CEILING TILE KIT

For Use Above the Ceiling Tile
Perfect for Use with All Plenum Equipment Boxes
And The Locking Strongbox



Allows all Configurations to meet State Building Codes, as all Wiring and the AC Receptacles in ALL Installations are ALWAYS Enclosed

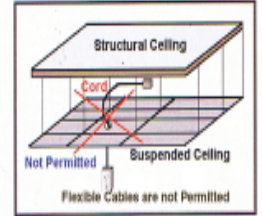
UNIQUE DESIGN HIDES ALL CABLES, WIRING & AC RECEPTACLES FROM VIEW

Unlike Competing Products, the Nigel B Ceiling Panel's Unique Design hides everything for a neater Installation while providing the Installer with many more Configuration Options.

THE CEILING TILE KIT

Made mainly of Aluminum and weighing half of any competing product, allows it to safely support more weight especially useful when using it with all of our Plenum Equipment Boxes. For a neater appearance, **the AC /Speaker Wiring Enclosure (see illustration below) eliminates the need for the AC Receptacle to be mounted below the Ceiling Tiles.**

(2) and 400-8(5).....page 219 of the Code



CAN BE CONFIGURED TO SUIT YOUR INSTALLATION AS MANY DIFFERENT CONFIGURATIONS ARE POSSIBLE

Shown in this leaflet are some of the many different configuration that can be employed.

TRADITIONAL INSTALLATIONS

For those Simple Installations that use a Pole Mounted Projector still benefit from the ability to Hide all the Wiring and Equipment by using the same combination of Locking Strongbox that's big enough to hold all the support Equipment such as a System Controller, from AMX®, Crestron® Arorora WACI® and Nigel B's Compact Amplifiers etc.

A Combination of Traditional Pole Mounted Projector and Ceiling Tile Kit



Shown with Cover Removed



THE AC/SPEAKER WIRING ENCLOSURE ELIMINATES THE NEED TO PLACE AC BOX & CABLES BELOW THE CEILING TILES

The AC / Wiring Enclosure fits directly to the Ceiling Tile Plate eliminating the need for it to be mounted below the Ceiling Tiles. This means the AC Supply and Signal Wiring to and from the various Support Equipment, is always totally enclosed and hidden from view.

Ceiling Tile Kit shown with the Projector Pole Mounted
(Ceiling Tile Kit Image Ghosted for illustration Purposes only)

STRONBOX MOUNTING OPTIONS

For those installations that require the Equipment to be mounted Below and Flush to Ceiling Tiles, there are two Options.

THE STRONBOX USED WITH THE CEILING TILE KIT

The Cover of the Strongbox is threaded to accept four Bolts that are attached to the Ceiling Tile Kit and then passed through the Ceiling Tile and attached to the Strongbox's Cover.

POLE MOUNTING

The illustration on the right shows the two Pole Mounting Bushes that are separated to allow Entry and Exit of all Wiring from the interior of the Strongbox The Strong Box can also be suspended above the Ceiling Tiles as shown on the Far Right.



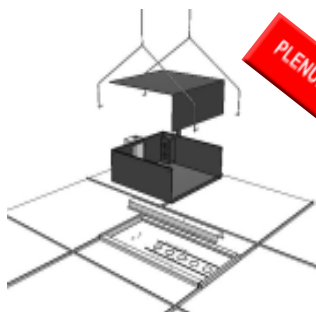
All Plenum Equipment Boxes can form an Integral part of the Ceiling Panel to form one Lightweight Unit. All Wiring is totally concealed from view including the Equipment & Power Sources, making it perfect for **any** Installation that requires everything to comply with NEC & State Building Codes.



All Plenum Equipment Box Versions



2U Rack Rail Equipment Box



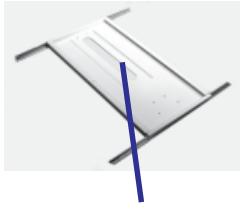
The Ceiling Plate is totally Supported by the UL/CSA Hanging Kit. In addition to prevent "Sway," the Panel is held in place with four Screws that lock the Unit to the Ceiling Grid Framing

Please turn over for more information and List Prices

POSITIONING THE CEILING PANEL

The Ceiling Tile Kit's Panel can be reversed, slid along the Ceiling Tile Grid Bars and because it can also move from left to right, this enables the Installer to position the Projector in many different positions. Hanging Kits are UL/CSA Listed to hold up 100 lbs.

**Top View
(Ceiling Tile not shown)**



Slot allows the Projector to be placed in many different Positions

IN ALL INSTALLATIONS ALL CABLES ARE HIDDEN FROM VIEW
Cables & Wiring use the inside of Projector's Pole & Plate to route to and from the Plenum Equipment Box, the AC/Speaker Wiring Enclosure and Projector for a totally concealed installation.



1 1/2" Threaded Bushing for the Projector's 1 1/2" Poles

USING THE PROJECTOR MOUNTING PLATE

The Projector Mounting Plate slides along the Slotted Cutout for an infinite number of Projector Positions and is placed directly to the underside of Ceiling Tiles. (4) Bolts pass through the Tile and (4) Nuts secure the Mounting Plate to the Ceiling Tile Kit's Panel.

CEILING TILE KIT

DIMENSIONS: 25" Long, 12" Wide

WEIGHT: 6lbs Approx

Less than half the weight of any competing product

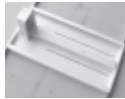
PARTS DESCRIBED IN THIS LEAFLET

The Power Cable is run through EMT Conduit to Link into the Internal AC Outlet



Speaker/Control Wiring In & Out Point

CEILING TILE KIT'S PANEL



HANGING KIT



AC / WIRING MOUNT



MOUNTING PLATE



CABLE RACEWAY COVER



PLENUM EQUIPMENT BOX



2U RACK LOCKING PLENUM BOX



LOCKING STRONG BOX



CEILING TILE KIT

REQUIRED PARTS

- (1) Tile Ceiling Kit Part # NB-CTK

2U RACK LOCKING PLENUM BOX FOR PROJECTOR MOUNTING

REQUIRED PARTS

- (1) 2U Rack Mount Plenum Equipment Box NB-2RUPB
- (2) Mounting Plates Part # NB-MP-MP (Poles are a Customer Supplied Part)

CEILING TILE KIT WITH PLENUM EQUIPMENT BOX

REQUIRED PARTS

- (1) Ceiling Kit Part # NB-CTK
- (1) Plenum Equipment Box for Ceiling Tile Kit Part # NB-PEBCK

CEILING TILE KIT WITH 2 U RACK LOCKING PLENUM BOX

REQUIRED PARTS

- (1) 2U Rack Locking Plenum Equipment Box Part # NB-2RUPB
- (1) Ceiling Tile Kit Part # NB-CTK

CAD Drawings created in AutoCAD can be downloaded from our web site for incorporation into your own design layout.

A Locking StrongBox can be Mounted directly to the underside of the Ceiling Tiles using a Mounting Plate or the Projector can be Installed using an additional Customer Supplied Pole

Additional Mounting Plates: Part # NB-MP \$125.95 List Price

NB-CTK	Ceiling Tile Kit includes AC / Speaker Wiring Enclosure, Raceway, Projector Mounting Plate, 5' Hanging Kit & all Hardware	\$299.95
NB-MP	Additional Projector Mount Plates (When Required)	\$129.95
NB-PEBCK	Standard Plenum Equipment Box for Ceiling Tile Kit, (Inc all Hardware)	\$299.95
NB-2RUPB	2U Rack Locking Plenum Equipment Box (2) 2U Rack Rails, (1) Fan & all Hardware	\$399.95
NB-2RUCK	Ceiling Tile Kit for 2U Rack Locking Plenum Equipment Box includes AC / Speaker Wiring Enclosure 2 Pole Mounting Plates & 5' Hanging Kit & all Hardware	\$299.95
NB-SBX	Locking Strongbox	\$299.95



10' & 15' Hanging Kits are available at no extra cost on request

Nigel B Design, Inc. California, USA • Tel: (818) 487-9323 • Fax: (818) 766-9805
Web Site: www.nigelbdesign.com. E-Mail: sales@nigelbdesign.com