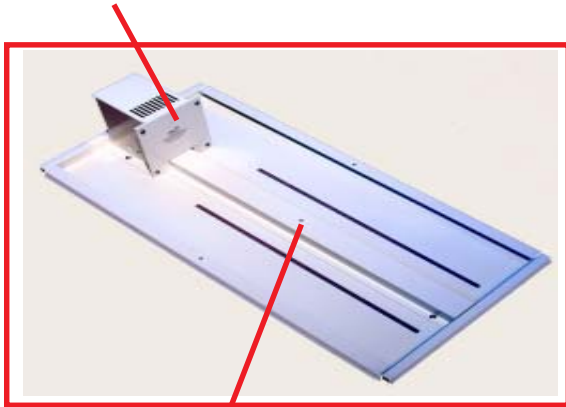


CEILING TILE KIT

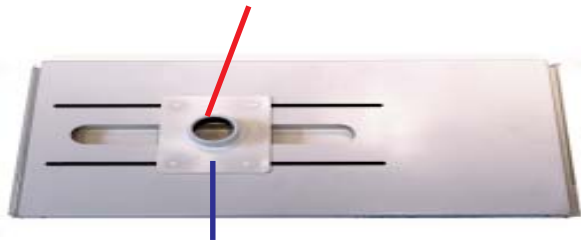
Meets NEC and State Building Codes
(As all wiring and the AC Receptacle is Enclosed)

PLENUM RATED

THE AC/SPEAKER WIRING ENCLOSURE INSTRUCTIONS



Cables run inside the Cable Cover and enter and exit through the Pipe's Coupling



The Projector Mounting Plate slides along the Slotted Cutout for an infinite number of Projector Positions and is placed directly to the underside of Ceiling Tiles. (4) Bolts pass through the Tile and (4) Nuts secure the Mounting Plate to the Ceiling Tile Kit's Panel located above.

NO MORE DANGLING WIRES SHOWING

The AC / Speaker Wiring or Plenum Equipment Box Enclosure fit directly to the Ceiling Tile's Panel forming an integrated Unit. This means the AC Supply and Signal Wiring to and from the various Support Equipment, this includes the AC Power Cord and Receptacle to the Projector are all enclosed above the Ceiling Tiles and hidden from view.

ELIMINATES THE NEED TO PLACE THE AC BOX & ANY CABLES BELOW THE CEILING TILES



Ceiling Tile Kit shown with the Projector Pole Mounted
(Ceiling Tile Kit Image Ghosted for illustration Purposes only)

THE STRONGBOX WHEN USED WITH THE CEILING TILE KIT

The StrongBox can be adjusted for almost infinite positioning in the same manner as that of the Projector.

The Cover of the Strongbox is threaded to accept (4) Bolts that are attached to the Ceiling Tile Kit and then passed through the Ceiling Tile and then attached to the Strongbox's Cover to complete the assembly.



The illustration shows how the Equipment installed in the StrongBox is mounted Below and Flush to the Ceiling Tiles.

PARTS SUPPLIED FOR THE STRONG BOX WHEN USED WITH THE CEILING TILE KIT

Part # NB-SBX

- (1) StrongBox complete with Internal AC Box & Power Receptacle
- (1) Ceiling Tile Kit with Hanging Kit
- (1) Raceway
- (1) Signal / Wiring Enclosure with Cover Plate



Hardware

- (4) 1/4.10 1" long Hex Bolts
- (6) 6.32 Nuts for Raceway
- (4) 8.32 x 1/4" long Screws for cover



Internal AC Receptacle

Two Internal Pole Mounting Bushes that allow Wiring and Cabling to Enter and Exit the StrongBox



The illustration shows the two Internal Pole Mounting Bushes that are separated to allow Entry and Exit of all Wiring to and from the interior of the Strongbox. The Strong Box can also be suspended above the Ceiling Tiles.

THE PLENUM EQUIPMENT BOX WHEN USED WITH THE CEILING TILE KIT- SEE NEXT PAGE

Part # NB-CTK

CEILING TILE KIT PARTS LIST

- (1) Ceiling Panel
- (1) 5' Long Hanging Kit complete with Hardware
- (1) Projector Mounting Plate
- (1) AC/ Speaker Wiring Enclosure & Cover complete with (1) AC Box, Receptacle & Cover Plate
- (1) Wiring Raceway

Hardware

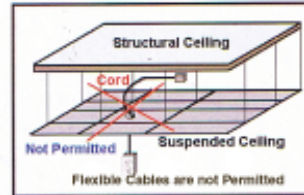
- (4) 10.32 x 1/2" Grid Screws
- (4) 8.32 x 1/4" long Cover Plate Screws
- (4) 1/4.20 Nuts
- (6) 6.32 Nuts
- (1) 8.32 Pole Locking Screw
- (1) 10.32 x 1/2" Truss Head Screw



THE A/C SPEAKER WIRING ENCLOSURE

Using our unique designed Ceiling Tile Kit, eliminates any unsightly cables protruding below the Tiles

-8(2) and 400-8(5).....page 219 of the Code



Shown with Cover Removed

thereby meeting all NEC and State Codes that prohibit Flexible Cables being routed from the Projector to a receptacle above the Tiles



Power Entry



Signal Wire Entry Points

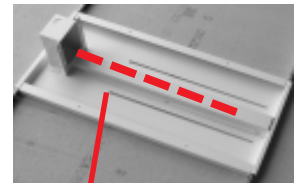


Hanging Hooks

Grid Screws

Ceiling Tile Configuration

(Cover Panel Removed)



All Wires & Cables run underneath the Removeable Raceway Plenum Box Configuration

POSITIONING THE CEILING PANEL

The Ceiling Panel can be reversed and moved from left to right. The Elongated Slot allows additional positioning. Dual Tracks also allow the Projector Mounting Plate that's fitted below the Ceiling Tiles to slide along the underside of the track for an almost variable positioning of the Projector. After fixing the Ceiling Plate, attach the Hanging Kit, securing it to the Roof Truss. Fit and tighten the (4) Grid Screws. Complete the routing of the Cables and then attach the Wiring Raceway.

USING THE PLENUM EQUIPMENT BOX

The Plenum Equipment Box with the attached Plenum Box Mount is then fixed using the (1) 3/8" long Screw on the top of the Raceway(already attached) to the suspended Hanging Ceiling Panel.

USING THE PLENUM EQUIPMENT BOX WITH THE NIGEL B DESIGN CEILING TILE KIT

Part # PEBCK

PARTS SUPPLIED

- (1) Ceiling Panel
- (1) 5' Long Hanging Kit complete with Hardware
- (1) Projector Mounting Plate
- (1) Wiring Raceway
- (1) NB-PEBCK Plenum Box 14" x 14"x 4.75" H inc (1) Inside AC / Wiring Bo AC Receptacle and Plate
- (1) Plenum Box Wiring Enclosure



Hardware

- (6) 6.32 Nuts
- (4) 1/4.20 Nuts
- (4) 10.32 x 1/2" Grid Screws
- (4) 8.32 x 1/4" Long Screws
- (1) 8.32x 3/8" Long Plenum Box Mounting Screw
- (1) 8.32 Pole Locking Screw

USING THE PLENUM BOX WITH A NON STANDARD CEILING TILE PART (NON NIGEL B DESIGN PRODUCT)

Part # PEBCK-NNB

PARTS SUPPLIED

- (1) NB-PEBCK Plenum Box 14" x 14"x 4.75" H inc (1) Inside AC / Wiring Box AC Receptacle and Plate
- (1) Plenum Box Wiring Enclosure



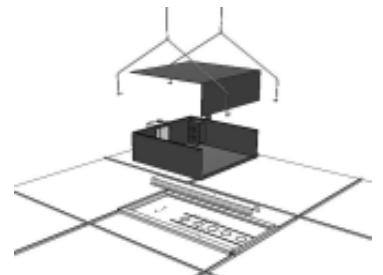
Hardware

- (4) 8.32 x 1/4" Long Screws
- (1) 10.32 x 1/2" for AC Box

The Power Cable is run through EMT Conduit to link into the Internal AC Outlet



Speaker/Control Wiring Out Point To Route Under Wiring Raceway to Inside of the Projector Pole



Products Proudly



Nigel B Design, Inc. California, USA. Tel: (818) 487-9323 Fax: (818) 766-9805
Web Site: www.nigelbdesign.com. E-Mail: sales@nigelbdesign.com